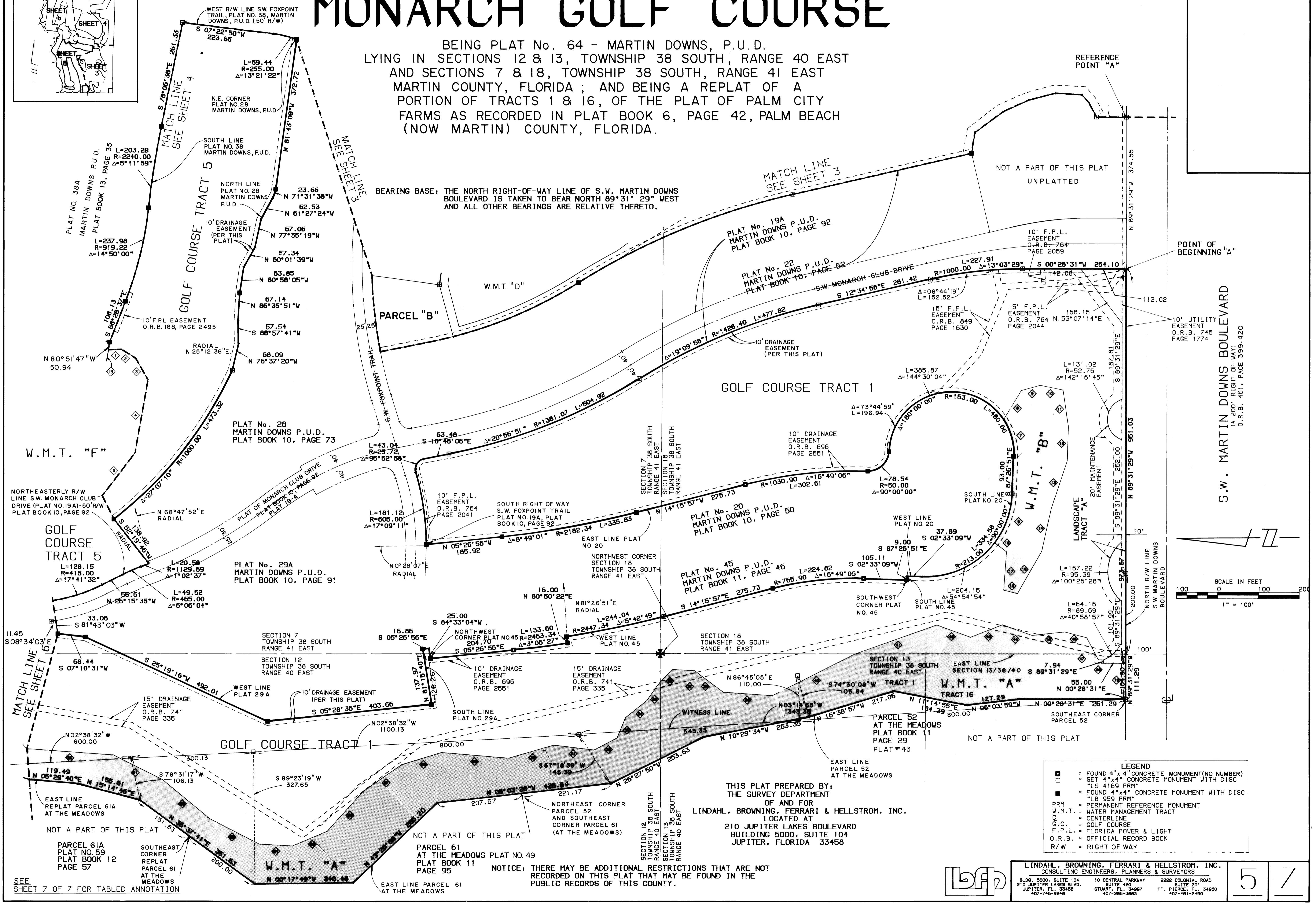
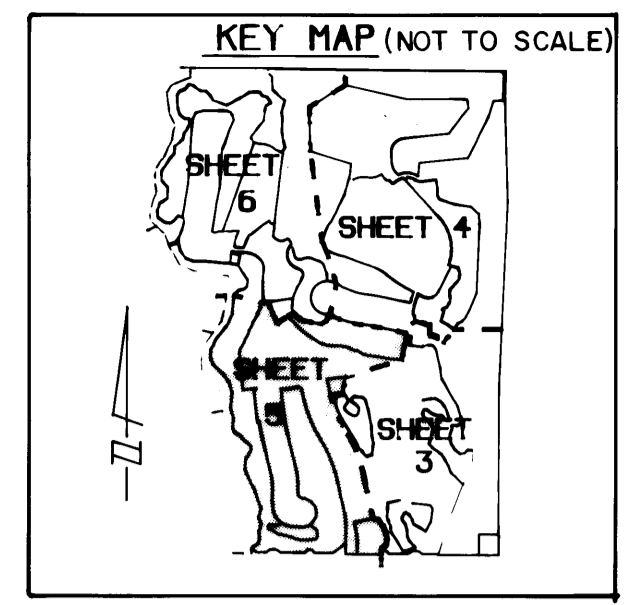
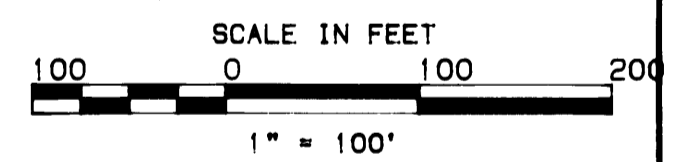


A PLAT OF MONARCH GOLF COURSE

BEING PLAT No. 64 - MARTIN DOWNS, P.U.D.
LYING IN SECTIONS 12 & 13, TOWNSHIP 38 SOUTH, RANGE 40 EAST
AND SECTIONS 7 & 18, TOWNSHIP 38 SOUTH, RANGE 41 EAST
MARTIN COUNTY, FLORIDA; AND BEING A REPLAT OF A
PORTION OF TRACTS 1 & 16, OF THE PLAT OF PALM CITY
FARMS AS RECORDED IN PLAT BOOK 6, PAGE 42, PALM BEACH
(NOW MARTIN) COUNTY, FLORIDA.



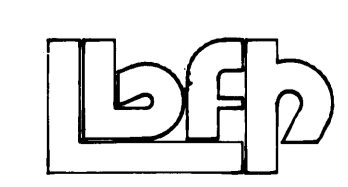
BEARING BASE: THE NORTH RIGHT-OF-WAY LINE OF S.W. MARTIN DOWNS BOULEVARD IS TAKEN TO BEAR NORTH 89°31' 29" WEST AND ALL OTHER BEARINGS ARE RELATIVE THERETO.



- LEGEND**
- = FOUND 4"x4" CONCRETE MONUMENT (NO NUMBER)
 - = SET 4"x4" CONCRETE MONUMENT WITH DISC "LS 4169 PRM"
 - = FOUND 4"x4" CONCRETE MONUMENT WITH DISC "LB 959 PRM"
 - PRM = PERMANENT REFERENCE MONUMENT
 - W.M.T. = WATER MANAGEMENT TRACT
 - = CENTERLINE
 - G.C. = GOLF COURSE
 - F.P.L. = FLORIDA POWER & LIGHT
 - O.R.B. = OFFICIAL RECORD BOOK
 - R/W = RIGHT OF WAY

THIS PLAT PREPARED BY:
THE SURVEY DEPARTMENT
OF AND FOR
LINDAHL, BROWNING, FERRARI & HELLSTROM, INC.
LOCATED AT
210 JUPITER LAKES BOULEVARD
BUILDING 5000, SUITE 104
JUPITER, FLORIDA 33458

NOTICE: THERE MAY BE ADDITIONAL RESTRICTIONS THAT ARE NOT RECORDED ON THIS PLAT THAT MAY BE FOUND IN THE PUBLIC RECORDS OF THIS COUNTY.



LINDAHL, BROWNING, FERRARI & HELLSTROM, INC.
CONSULTING ENGINEERS, PLANNERS & SURVEYORS
BLDG. 5000, SUITE 104 10 CENTRAL PARKWAY 2222 COLONIAL ROAD
210 JUPITER LAKES BLVD. SUITE 420 FT. PIERCE, FL 34950
JUPITER, FL 33458 STUART, FL 34987 FT. PIERCE, FL 34950
407-745-9248 407-286-3883 407-461-2450